



# FROM DAWN TILL DUSK

THE BEAUTY OF LIFE ON THE FARM



**49.5 Acres**



**Auction: May 30**

8:30 Preview with Free Breakfast

Sandwiches

9:00 Equipment & Personal Goods

11:00 Real Estate



**Open House:**

April 30 & May 12 from 4-6PM



337 Swamp Rd

Halifax PA

(DAUPHIN COUNTY)



**Sellers: John & Anna Mae Riehl**

Settlement on or before July 17, 2026

Down payment \$45,000 due day of sale.



Starting Bid:

**\$450,000**



**Call Henry for Full Auction Brochure**

717-799-4264

Previously used as a Bed and Breakfast, this house is in the process of being transitioned to a 3 bed, 3 bath home, with plenty of newer upgrades such as floor heat, electrical, and plumbing, while keeping the rustic charm of a stone fireplace and original interior log walls.

The 40x80 bank barn offers plenty of room for your outdoor desires but is in need of some repairs.

**This incredible farmette has it all:** pasture, tillable fields, and woods providing excellent hunting and incredible views. It borders Powells Creek, known for its great trout fishing, and is within walking distance to state forest and the popular Appalachian Trail.



**A rare gem in the making!**

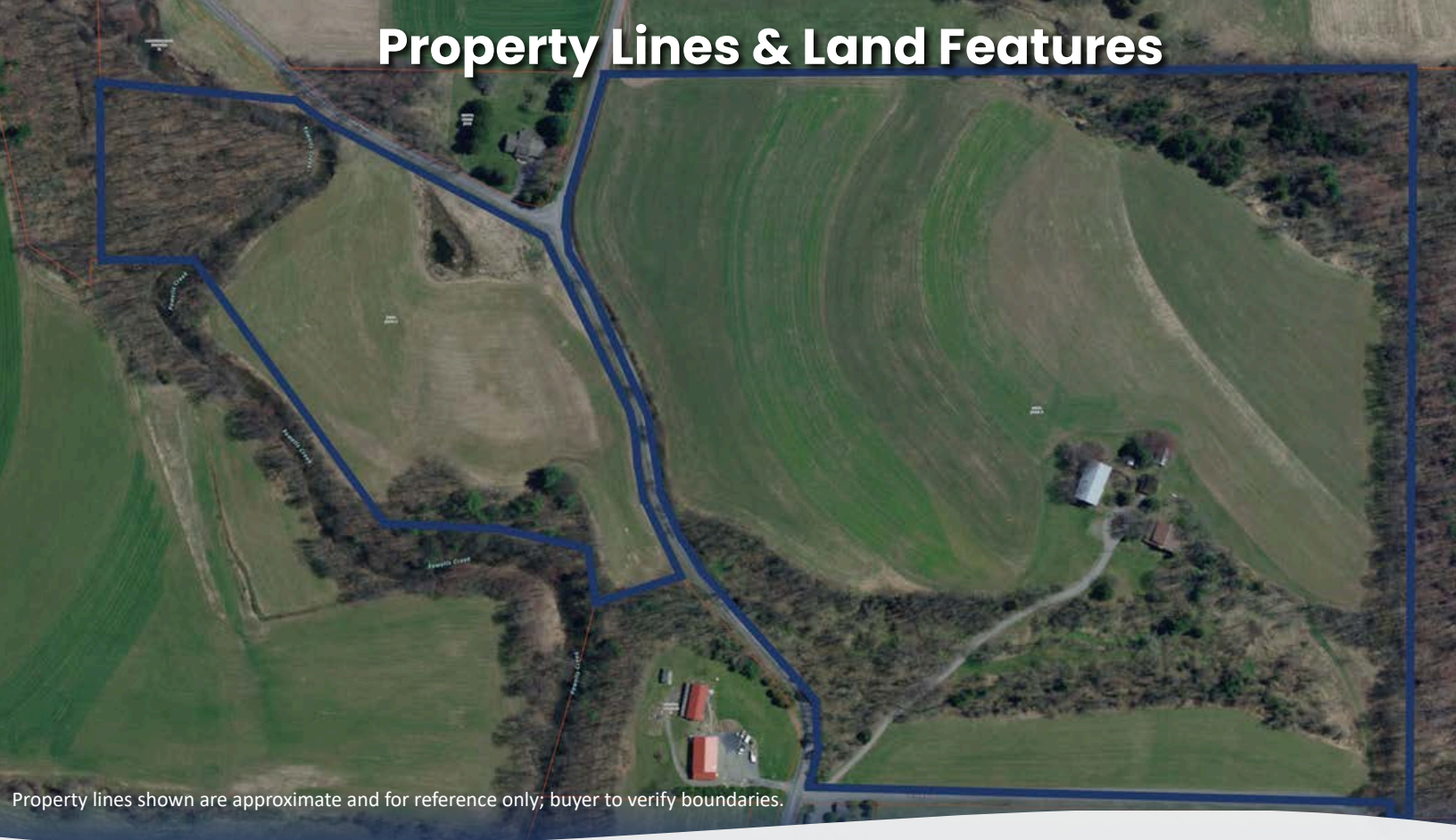
**Call the Intel Team:**  
Daniel King AU006299  
(717) 917-5844  
Joel Yoder AU006463  
(610) 750-2427  
Henry Kauffman Jr. AA019894  
(717) 799-4264  
Samuel Stoltzfus AU006482  
(717) 371-3010



View more photos at  
[IntelAuctions.com](https://www.IntelAuctions.com)

Follow us Live on  
**Auction Day**  
717-690-8081

# Property Lines & Land Features



Property lines shown are approximate and for reference only; buyer to verify boundaries.

## Property and Tax information:

### Year Built:

- House: 1990

### Condition

- House: Remodeling In Progress
- Barn: Awaiting Restoration

### Acres: 49.5

### Taxes: \$4,809

### Township: Wayne Township

### Sewer Type / Location:

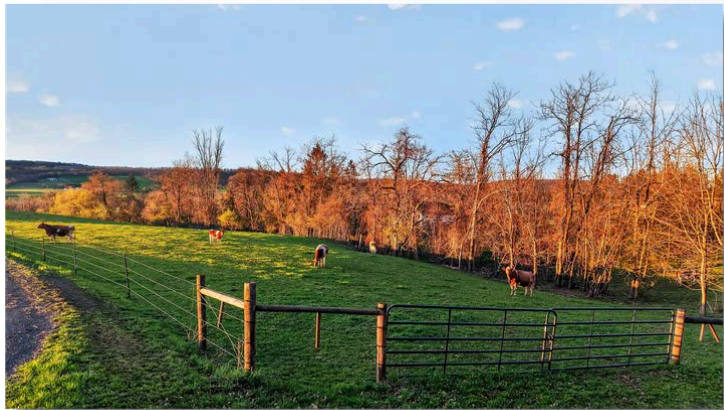
Tank and drainfield on west side of house

### Well Location: East side of house



## Thinking about buying a property?

Let us put the deposit money down  
for you. Call 717-917-5844



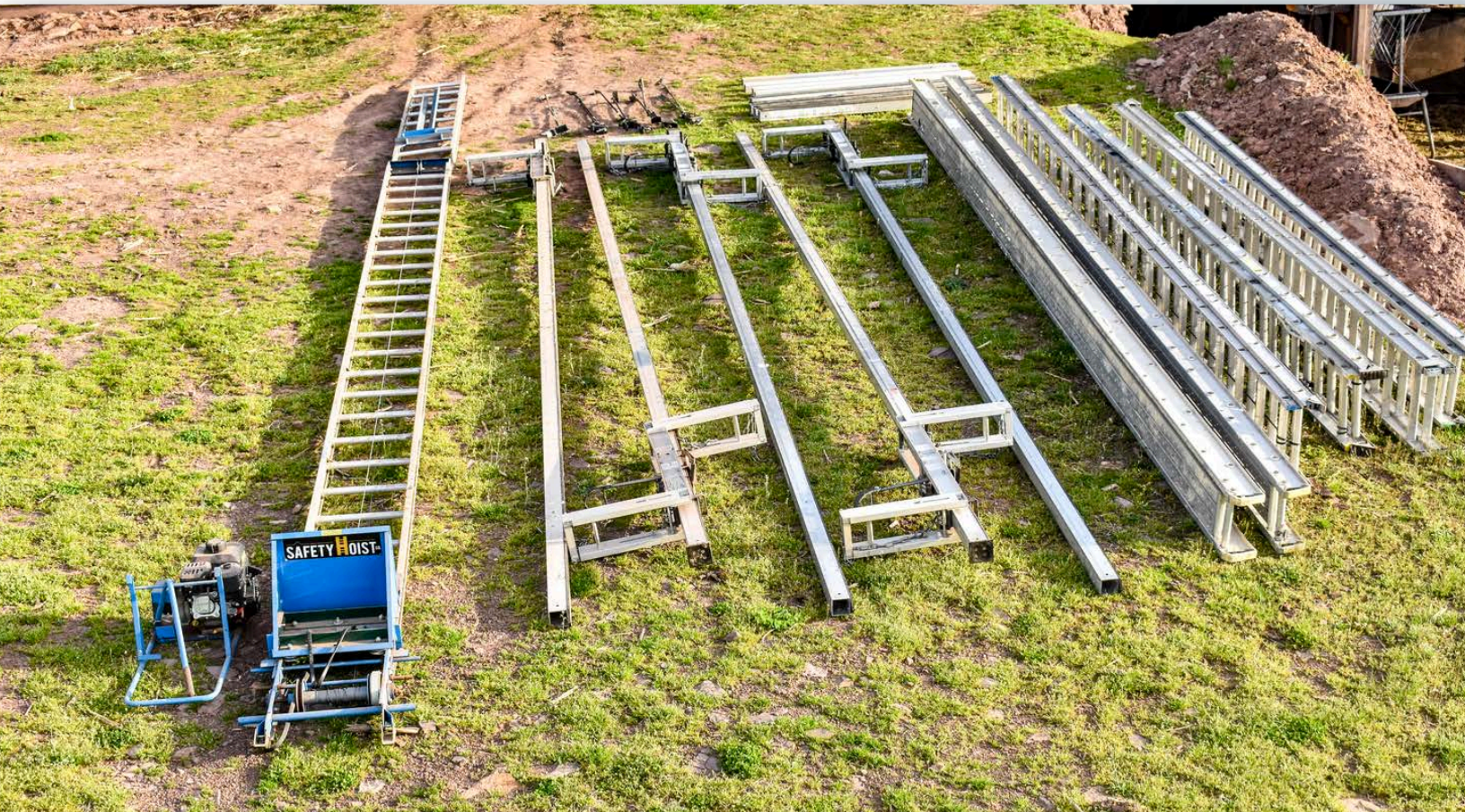
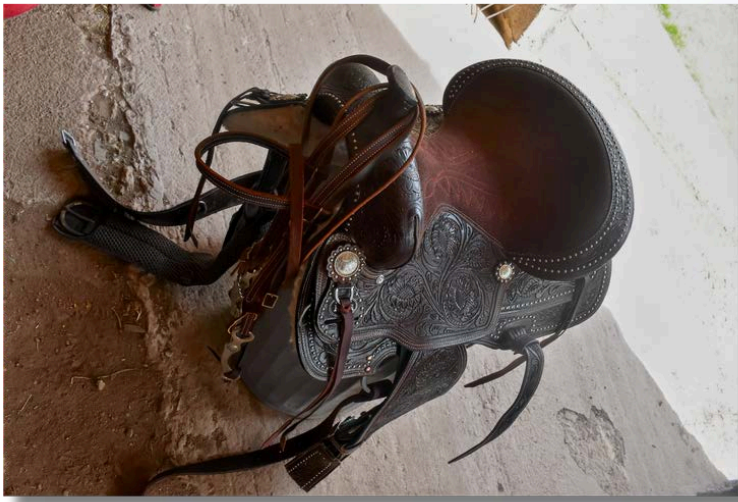












# Frisky's Auction Listings

Keeping you informed of upcoming *Auctions!*



## UPCOMING REAL ESTATE

Daniel King AU006299  
(717) 917-5844

Joel Yoder AU006463  
(610) 750-2427

Henry Kauffman Jr. AA019894  
(717) 799-4264

Samuel Stoltzfus AU006482  
(717) 371-3010

Follow us LIVE on sale days. call 717-690-8081

View our current auction listings at [intelauctions.com](http://intelauctions.com)

## FARM & HOME

### APRIL 27 (6PM) - 113 BLACK HORSE ROAD, PARADISE, PA - STEPHEN & CRYSTAL ZIMMERMAN

Once in a lifetime opportunity to invest in a detailed house, horse barn, and retail store all in one. Work from home! Formally Leacock Shoe Store.

### APRIL 28 (6PM) - 31 HERSHEY AVE, PARADISE, PA - NAOMI (CHRIST) FISHER

Paradise Homestead. 4 bed, 2 bath home with a newer 16x24 garage, horse barn. Convenient Location!

### MAY 5 (6PM) - 555 MEETING HOUSE RD, GAP, PA - JOHN MARSHALL ESTATE

Peaceful setting. 1 acre with single wide house needing some updates. On-site well, sewer, electric. Ready for your personal touch.

### MAY 9 (12PM) - 5763 NORTHEIMER RD, NARVON, PA - DANIEL & MIRIAM MILLER

1.87 acres with 3 bed 2 bath updated home, horsebarn/shop, outbuildings and pasture. Beautiful Welsh Mountain Setting!!

### MAY 11 (6PM) - 740 LINCOLN GARDENS RD, EPHRATA, PA - STEPHEN & MARY STOLTZFUS

Modern home with incredible views! 1+ acres with 3 bed, 2 bath home, large garage, full basement, large backyard. *Detailed Ephrata Home!*

### MAY 19 (6PM) - 2014 MAIN STREET, NARVON, PA - COMMERCIAL PROPERTY

Prime opportunity to have your own business location. Great exposure right along RT 23 in Churchtown, PA. *Exciting listing!*

### MAY 20 (6PM) - 5624 OLD PHILADELPHIA PIKE, GAP, PA - SAM & ANNA MARY EBERSOL

2.6 acres with a 5 bed, 2 bath home. 40' x 60' horsebarn/garage with full 2nd floor rec-room, kitchen, and bathroom. Outbuildings. Pastures. *White Horse area!*

### MAY 26 (6PM) - 350 MIDDLE RD, MILLERSBURG, PA - JOHN & SARAH KING

*Dauphin County Deluxe!* 6 bed 3 bath home, 3000 sq ft shop all on 10 acres bordering Shippens Run Creek.

### MAY 28 (6PM) - 291 HEBE BYPASS RD, HERNDON, PA - DANIEL & SYLVIA MAE ESH

6 acres complete with 5-bedroom, 2 bath home that is fully remodeled with modern features.

Horse barn, 30 x 40 shop/garage with upstairs rec-room. *NICE LOCATION!*

### ★ MAY 30 (11AM) - 337 SWAMP RD, HALIFAX, PA JOHN & ANNA MAE RIEHL

49.5 acres. 3 bed, 3 bath Homestead. *Secluded Dauphin County Homestead!*

### JUNE 5 (6PM) - 339 CHURCHTOWN ROAD, NARVON, PA - MERVIN & REBECCA ANN KAUFFMAN

*Beautiful Country Dwelling!* 2.24 acres with detailed home, horsebarn, office, and workshop. Beautiful landscaping!

### JUNE 27 (10AM) - 1824 RED BANK RD, MCALISTERVILLE, PA - BETR LAND LLC

127 acre organic farm. Dairy facilities new in 2010. House recently remodeled. *Rare opportunity!*

★ NEW LISTINGS



**intel** AUCTIONS  
FARM & HOME  
DIVISION

# INVESTMENTS & RECREATIONAL

**APRIL 22 (6PM) - 271 RAMSEY DR, JERSEY SHORE, PA - WINDY HILL RENTALS**

Air Bnb rental. Prime location along the popular Pine Creek. Pickle ball court, bikes, kayaks, loaded and sells fully furnished.  
**SELLS VIA INTEL AUCTIONS PHONE BIDDING!**

**APRIL 23 (6PM) - 624 BELLEFONTE AVE, LOCK HAVEN, PA - NLS REALTY**

3 unit apartment building. Solid brick structure, fully occupied. **SELLS VIA INTEL AUCTIONS PHONE BIDDING!**

**MAY 12 (6PM) - 218 SILVER MINE RD, CONESTOGA, PA - HENCHE HOLDINGS LLC**

3.7 acres with 4-unit apartment building plus 2 different single family homes and a 6-unit storage building all situated along the beautiful Pequea Creek. *Investment Opportunity!*

**MAY 13 (6PM) - 96 FROG HOLLOW RD, JERSEY SHORE, PA - FISHER'S BNB LLC**

Pine Creek Lodge. 2 bed, 2 bath house with 2nd floor balcony, waterside camping. Amazing Opportunity! **SELLS VIA INTEL AUCTIONS PHONE BIDDING!**

**JUNE 9 (6PM) - 309 N 12TH STREET, LEBANON, PA - EPHRAIM STOLTZFUS**

*Investor Highlight!* 2 unit in a quiet section of Lebanon City. Private drive with off street parking. Tenant occupied with income of over \$23,000. @ year. **SELLS VIA INTEL AUCTIONS PHONE BIDDING!**

**JULY 7 (6PM) - 1113 UPPER WOODS RD, HONESDALE, PA - UPPER WOODS CABIN**

34 acres with a secluded 2 bed, 2 bath Air BnB deluxe selling fully furnished. This hidden gem borders State Game Lands 159 and offers the best of PA Hunting including white tail deer, black bear, turkey, coyotes, bobcats, etc.

**SELLS VIA INTEL AUCTIONS PHONE BIDDING!**

**JULY 10 (6PM) - SLATE RIDGE RD, WHITEFORD, MD - STOLTZFUS FOREST PRODUCTS**

*Hunter's Paradise!* 157 acres woods. Prime Harford County, Maryland hunting. Just 45 minutes from Gap, PA.  
**SELLS VIA INTEL AUCTIONS PHONE BIDDING!**



# AUCTIONS & EVENTS

**APRIL 24 (5PM) - 2271 ROBERT FULTON HWY, PEACH BOTTOM, PA - STALLION PRESENTATION**

Sale preview and Stallion Presentation. Free pork sandwiches and ice cream!

**APRIL 25 (10AM) - 2271 ROBERT FULTON HWY, PEACH BOTTOM, PA - QUALITY HORSE SALE**

To consign quality, sound horses call 717-529-3846. Preview at 7AM, sale at 10AM.

**APRIL 29 (3PM) - 150 EASTBROOK RD, SMOKETOWN, PA - EASTBROOK WELLSRING CARE CLINIC**

Food, fun, and a faced paced auction! Swingsets, patio sets, grills, tools, gift baskets! Call 717-669-5754 to donate items.

**MAY 8 (1PM) - 794 STATE RT 25, MILLERSBURG, PA - CHUBB CONSTRUCTION LIQUIDATION**

7 work trucks, trailers, skid loaders, excavators, roofers buggy. Huge lineup of construction tools.

**MAY 9 (9AM) - 5763 NORTHEIMER RD, NARVON, PA - DANIEL & MIRIAM MILLER**

Chevy GMC Worktruck, Bobcat skidloader. Also selling lots of construction tools and material, mowers, and more.

**MAY 15 (6PM) - 23 N MARKET ST, LANCASTER, PA - STOLTZFUS FARMS PRODUCE MARKET**

Profitable produce stand in Lancaster Central Market. Great customer base for local grown produce, open year-round 3 days @ week.

**SELLS VIA INTEL AUCTIONS PHONE BIDDING!**

**MAY 29 (3PM) - 1030 PRECAST ROAD, NEW HOLLAND, PA - LARGE BENEFIT AUCTION FOR THE CYNTHIA ESH FAMILY**

Lots of great food including drive through starting @ 3 PM - Auction starting @ 4 PM with large variety of donated items.

Sheds, swingsets, tools, theme baskets and more. Call with larger donations and questions - 717-598-6295.

**★ MAY 30 (9AM) - 337 SWAMP RD, HALIFAX, PA - GOLDEN RIDGE ENTERPRISES**

Trailers, ladders, scaffolding, planks, tractor, hay equipment, riding horses, & more.

★ **NEW LISTINGS**



**intel AUCTIONS**  
A Better Auction Experience



### **EQUIPMENT AND PERSONAL ITEMS**

24' flatbed trailer - Mahindra tractor & attachments - 6' mower  
12' grain auger - forks - bucket - 7' 3-point sickle bar mower  
273 New Holland small baler w/ thrower - 847 New Holland 5x5 round baler  
710 Pequea tedder 469 - New Holland 9' haybine - hay rake - 16' livestock trailer  
20-ton wood splitter - 3 registered Arabian riding horses - 1-ton pig feeder - 110-gal waterer  
chicken coop & 15 young layers - rabbit hutch - saddles - and more.

