




Northeimer Road Real Estate

An Outstanding Homestead in the Beautiful Welsh Mountain

 5763 Northeimer Rd
Narvon PA

 **1.8 acres**



Auction Date: May 9

Tools @ 9 am | Real Estate at 12 pm

Open House:

April 10 and May 1 from 4-6 pm



Sellers: Daniel and Miriam Miller

Settlement on or before: July 8 2026

Down payment \$40,000 due day of sale.

HOME FEATURES

- 3 Bedrooms, 2 Bathrooms
- Delicate kitchen with peninsula
- Refrigerator and range included
- Living Room
- Family Room
- Mudroom with closets
- Separate office room
- New roof in 2023
- Wrap-around porch
- Large deck and patio
- Hardwood flooring
- Open stairway to second floor
- Basement with propane stove

OUTBUILDINGS

- 28' x 52' two-stall horse barn with Large workshop with wood stove (New roof in 2023)
- Equipment storage port
- 12' x 24' vinyl garden shed
- 6' x 8' block diesel room

PROPERTY ADVANTAGES

- Luscious landscaping
- Mature trees throughout property
- Horse pasture
- Wrap-around driveway



Starting Bid: \$325,000

MECHANICAL & UTILITIES

- Fully wired for on or off-grid power
- New solar system (2025)
- Extensive floor heat system
- Propane boiler and water heater
- 1000-gallon propane tank
- Diesel unit with air compressor
- 2 – 500 gallon air tanks
- Water softener system

Call the Intel Team:

Daniel King AU006299

(717) 917-5844

Joel Yoder AU006463

(610) 750-2427

Henry Kauffman Jr. AA019894

(717) 799-4264

Samuel Stoltzfus AU006482

(717) 371-3010



View more photos at
IntelAuctions.com

Property Lines & Land Features



Property lines shown are approximate and for reference only; buyer to verify boundaries.

Property and Tax information:

Year Built:

- House: 2001

Condition

- House: Great

Acres: 1.8 acres

Taxes: \$6580

Township: Salisbury

Sewer Type / Location: In the yard below the driveway- sand mound beside shed

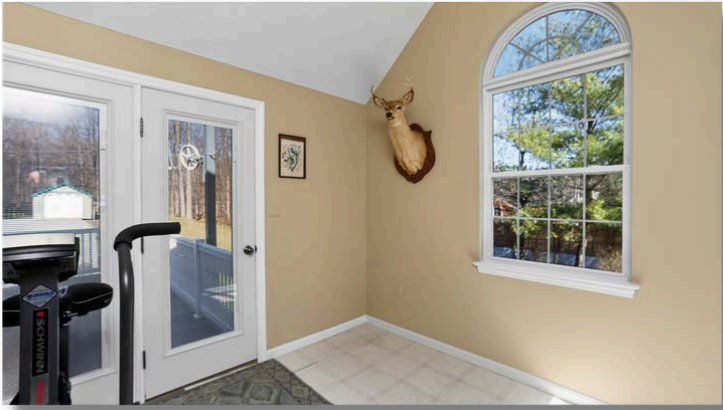
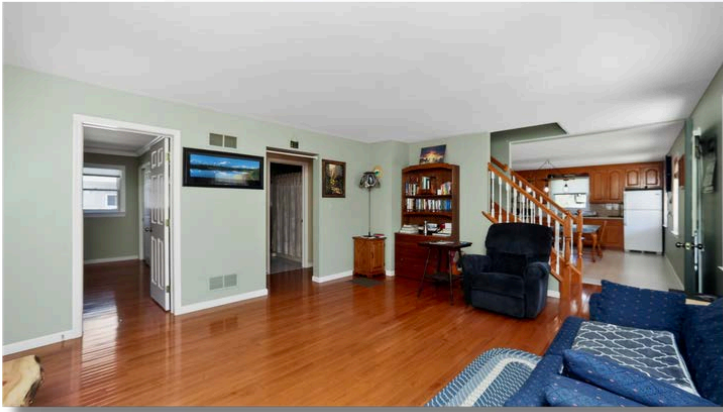
Well Location: Southeast corner of house in the yard



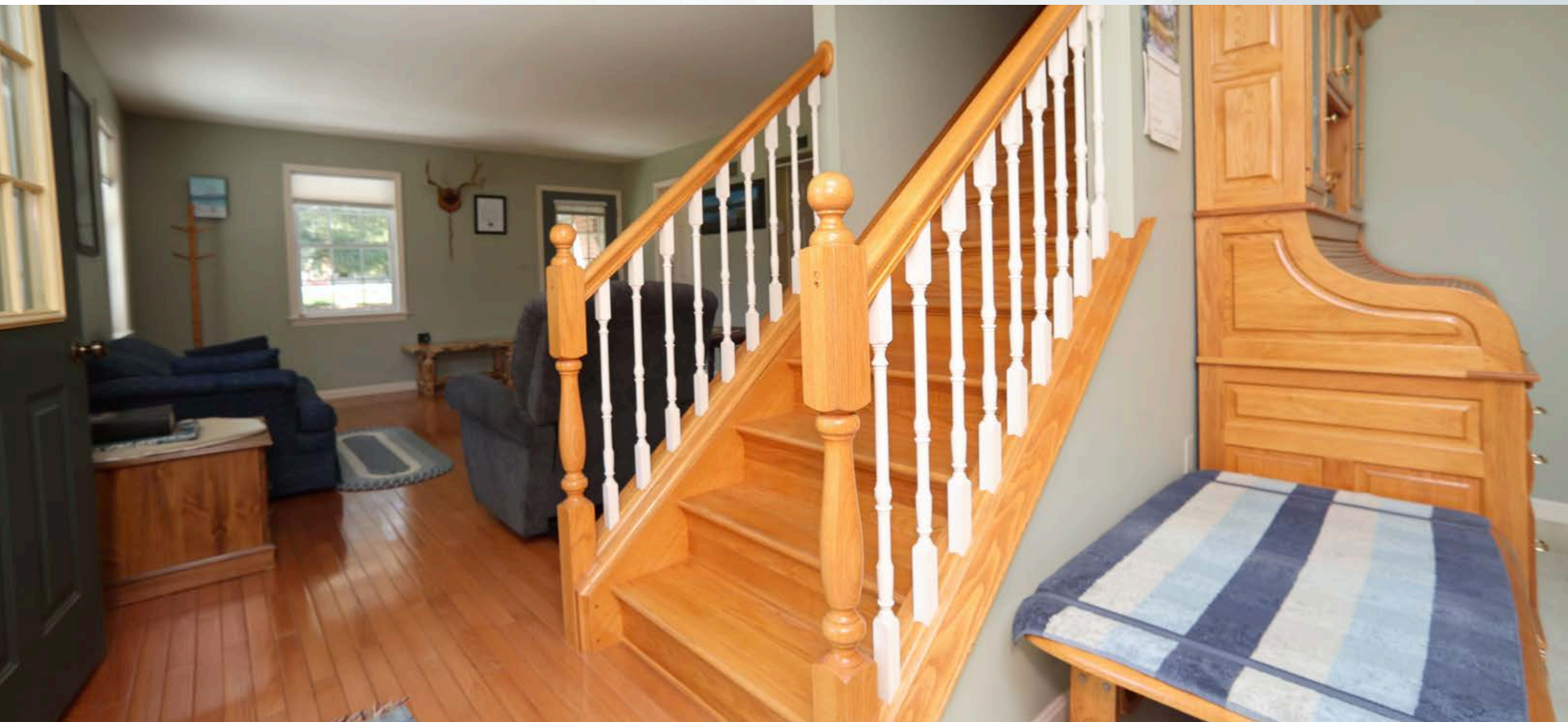
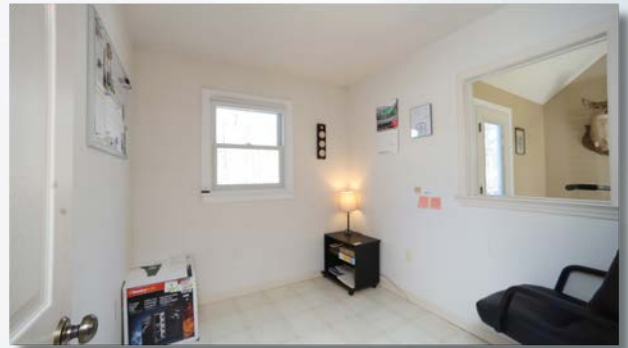
Thinking about buying a property?

Let us put the deposit money down
for you. Call 717-917-5844





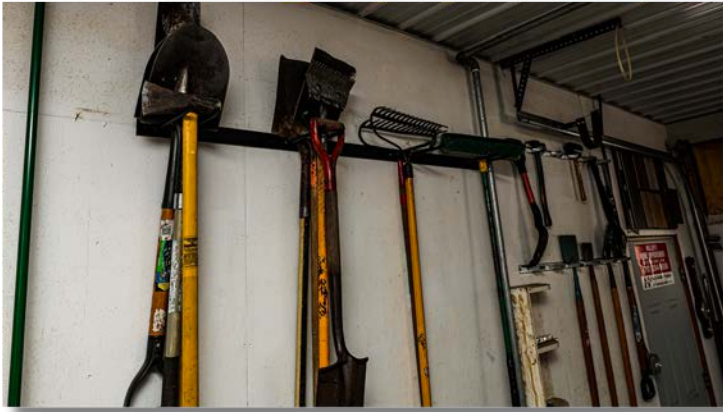












UPCOMING AUCTIONS & EVENTS

- APRIL 2 (6PM) - 425 CIDER PRESS RD, LOCK HAVEN, PA - ERVIN STOLTZFUS**
3 acres with a new home built in 2022. Woods, stream, great location. **SELLS VIA INTEL AUCTIONS PHONE BIDDING!**
- APRIL 8 (6PM) - 6142 BEAVERDAM RD, NARVON, PA - DAVID & PRISILLA BEILER**
3.03 acres with modern family homestead. 4 bed, 2 bath house, horse barn, pastures, outbuildings. Loaded with extras!
- APRIL 11 (9AM) - 3010 COMPASS RD, HONEY BROOK, PA - KEYSTONE STEEL STRUCTURES**
Large Equipment including pettibones, skidloaders, mini stand-on loaders, work truck.
Welders, generators, huge selection of corded and cordless dewalt tools.
- APRIL 15 (6PM) - 471 WEAVERTOWN RD, MYERSTOWN, PA - JAMES & NANCY STOLTZFUS**
Country setting in Lebanon County. 3 bed, 2 bath home. Horse barn, pasture, chicken barn. Rec-Room. Surrounded by Farmland.
- APRIL 16 (9:00AM) - 8 TOWNSHIP DRIVE, PARADISE, PA - VINTAGE WOOD & FORGED IRON**
Complete dispersal! Trucks, trailers, combilifts, woodworking equipment, lots of tools. Will be an exciting day!
- APRIL 17 (6PM) - 498 GREEN LN, BRISTOL, PA - LANCASTER BAKERY**
Huge opportunity to buy a well established bakery at the sought after Bristol Markets. Highly Profitable. **SELLS VIA INTEL AUCTIONS PHONE BIDDING!**
- APRIL 22 (6PM) - 271 RAMSEY DR, JERSEY SHORE, PA - WINDY HILL RENTALS**
Air Bnb rental. Prime location along the popular Pine Creek. Pickle ball court, bikes, kayaks, loaded and sells fully furnished.
SELLS VIA INTEL AUCTIONS PHONE BIDDING!
- APRIL 23 (6PM) - 624 BELLEFONTE AVE, LOCK HAVEN, PA - NLS REALTY**
3 unit apartment building. Solid brick structure, fully occupied. **SELLS VIA INTEL AUCTIONS PHONE BIDDING!**
- APRIL 24 (5PM) - 2271 ROBERT FULTON HWY, PEACH BOTTOM, PA - STALLION PRESENTATION**
Sale preview and Stallion Presentation. Free pork sandwiches and ice cream!
- APRIL 25 (10AM) - 2271 ROBERT FULTON HWY, PEACH BOTTOM, PA - QUALITY HORSE SALE**
To consign quality, sound horses call 717-529-3846. Preview at 7AM, sale at 10AM.
- APRIL 27 (6PM) - 113 BLACK HORSE ROAD, PARADISE, PA - STEPHEN & CRYSTAL ZIMMERMAN**
Once in a lifetime opportunity to invest in a detailed house, horse barn, and retail store all in one. Work from home! Formerly Leacock Shoe Store.
- APRIL 28 (6PM) - 31 HERSHEY AVE, PARADISE, PA - NAOMI (CHRIST) FISHER**
Paradise Homestead. 4 bed, 2 bath home with a newer 16x24 garage, horse barn. Convenient Location!
- APRIL 29 (3PM) - 150 EASTBROOK RD, SMOKETOWN, PA - EASTBROOK WELLSRING CARE CLINIC**
Food, fun, and a faced paced auction! Swingsets, patio sets, grills, tools, gift baskets! Call 717-669-5754 to donate items.
- MAY 5 (6PM) - 555 MEETING HOUSE RD, GAP, PA - JOHN MARSHALL ESTATE**
Peaceful setting. 1 acre with single wide house needing some updates. On-site well, sewer, electric. Ready for your personal touch.
- MAY 8 (1PM) - 794 STATE RT 25, MILLERSBURG, PA - CHUBB CONSTRUCTION LIQUIDATION**
7 work trucks, trailers, skid loaders, excavators, roofers buggy. Huge lineup of construction tools.
- MAY 9 (9AM) - 5763 NORTHEIMER RD, NARVON, PA - DANIEL & MIRIAM MILLER**
Beautiful country setting with updated house, barn and outbuildings. Also selling an interesting line of tools, construction equipment, & household items.
- MAY 11 (6PM) - 740 LINCOLN GARDENS RD, EPHRATA, PA - STEPHEN & MARY STOLTZFUS**
Modern home with incredible views! 1+ acres with 3 bed, 2 bath home, large garage, full basement, large backyard. *Detailed Ephrata Home!*
- MAY 12 (6PM) - 218 SILVER MINE RD, CONESTOGA, PA - HENCHE HOLDINGS LLC**
3.7 acres with 4-unit apartment building plus 2 different single family homes and a 6-unit storage building all situated along the beautiful Pequea Creek. *Investment Opportunity!*
- MAY 13 (6PM) - 96 FROG HOLLOW RD, JERSEY SHORE, PA - FISHER'S BNB LLC**
Pine Creek Lodge. 2 bed, 2 bath house with 2nd floor balcony, waterside camping. Amazing Opportunity! **SELLS VIA INTEL AUCTIONS PHONE BIDDING!**
- MAY 15 (6PM) - 23 N MARKET ST, LANCASTER, PA - STOLTZFUS FARMS PRODUCE MARKET**
Profitable produce stand in Lancaster Central Market. Great customer base for local grown produce, open year-round 3 days @ week.
SELLS VIA INTEL AUCTIONS PHONE BIDDING!
- MAY 19 (6PM) - 2014 MAIN STREET, NARVON, PA - COMMERCIAL PROPERTY**
Prime opportunity to have your own business location. Great exposure right along RT 23 in Churchtown, PA. *Exciting listing!*
- MAY 20 (6PM) - 5624 OLD PHILADELPHIA PIKE, GAP, PA - SAM & ANNA MARY EBERSOL**
2.6 acres with a 5 bed, 2 bath home. 40' x 60' horsebarn/garage with full 2nd floor rec-room, kitchen, and bathroom. Outbuildings. Pastures. *White Horse area!*
- MAY 26 (6PM) - 350 MIDDLE RD, MILLERSBURG, PA - JOHN & SARAH KING**
Dauphin County Deluxe! 6 bed 3 bath home, 3000 sq ft shop all on 10 acres bordering Shippens Run Creek.
- JUNE 27 (10AM) - 1824 RED BANK RD, MCALISTERVILLE, PA - BETR LAND LLC**
127 acre organic farm. Dairy facilities new in 2010. House recently remodeled. *Rare opportunity!*
- JUNE 29 (6PM) - 7814 STATE RT 147, SUNBURY, PA - AMOS JAY FISHER**
11.5 acre, 3 bed 4 bath homestead with 24' x 30' horse barn, garage, pastures, woods. *Great location!*
- JULY 7 (6PM) - 1113 UPPER WOODS RD, HONESDALE, PA - UPPER WOODS CABIN**
34 acres with a secluded 2 bed, 2 bath Air BnB deluxe selling fully furnished. *This hidden gem borders State Game Lands 159 and offers the best of PA Hunting including white tail deer, black bear, turkey, coyotes, bobcats, etc.*
SELLS VIA INTEL AUCTIONS PHONE BIDDING!
- JULY 10 (6PM) - SLATE RIDGE RD, WHITEFORD, MD - STOLTZFUS FOREST PRODUCTS**
Hunter's Paradise! 157 acres woods. Prime Harford County, Maryland hunting. Just 45 minutes from Gap, PA.
SELLS VIA INTEL AUCTIONS PHONE BIDDING!

★ **DATE PENDING - 291 HEBE BYPASS RD, HERNDON PA - DANIEL & SYLVIA MAE ESH**
6 acres complete with 5-bedroom, 2 bath home that is fully remodeled with modern features.
Horse barn, 30 x 40 shop/garage with upstairs rec-room. *NICE LOCATION!*



VEHICLE & EQUIPMENT

- 2010 GMC Duramax diesel with Allison transmission – including toolbox with ladder rack
- Bobcat S185 skid loader – CHA hydraulic quick attach – 1,530 HRS



HOUSEHOLD & MISCELLANEOUS ITEMS

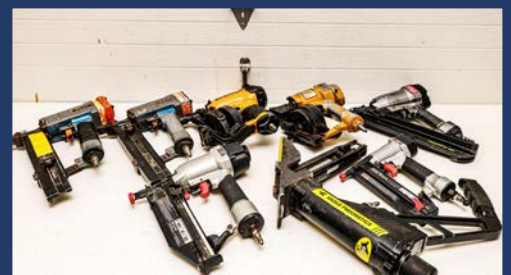
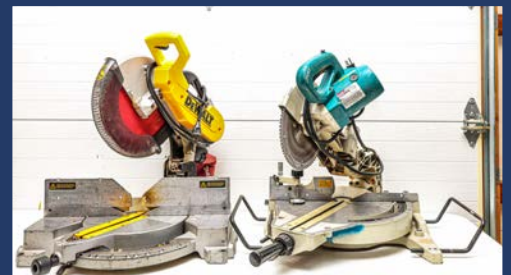
- Charcoal & Propane Grills
- Leather saddle
- 21-speed Schwinn mountain bike
- Dining table with 4 chairs
- Misc. household items

LAWN & OUTDOOR EQUIPMENT

- 48" Snapper Pro with dolly
- LT1000 Craftsman mower
- 21" Toro self-propelled mower
- Stihl BR600 backpack blower
- Stihl Chain saw

CONSTRUCTION & SHOP

- 5000-watt Honda generator
- 220-volt heater
- Aluminum coil brake
- 16' aluminum plank
- DeWalt & Makita Chop saws
- New Myers electric well pump
- Auto-feed deck screw system
- Large selection of bolts, lag screws, and organizers
- 10' work table
- Wrenches, levels, clamps
- Loaded bolt bins
- Metal banding unit
- Air compressors
- Ladder jacks
- Extension ladder
- Multiple step ladders
- Jobsite lights
- Ridgid shop vac
- Kreg pocket hole jig set
- Shingle shovels
- Jackson wheelbarrow
- Mics. Lumber
- Vinyl windows
- Nailers & staplers
- Paslode framing nails



Call Daniel for a
Complete Brochure
717-917-5844



AUCTION DAY SCHEDULE

- 8:30 AM – Auction Preview
with free breakfast sandwiches
- 9:00 AM – Auction Begins with: Tools, equipment & building supplies
- 12:00 PM – Real Estate Auction