



Pine Creek Lodge

The Best Of Summer



96 Frog Hollow RD
Jersey Shore PA



Auction Ends: May 13 @ 6pm
Call Henry for private showings (717)799-4264



Sellers: Fisher BNB LLC.

Settlement on or before: July 15 2026
Down payment \$25,000 due day of sale.



.57 acres

This charming 2-bedroom, 2-bath retreat is a must-see! The interior has been updated with many modern features and is currently being used as a successful short-term rental. The property sells fully furnished, making it a turnkey opportunity.

The exterior boasts a deck overlooking Pine Creek, a second-floor balcony, and an incredible waterside camping area perfect for relaxing or entertaining. Also included is a two-bay, two-story garage offering plenty of space for storage or recreational use.

With Rails-to-Trails access located directly across the creek, this property truly has a lot to offer!

INTEL PHONE BIDDING AUCTION

STARTING BID: \$275,000

CALL AUCTIONEERS TO INQUIRE ON
CURRENT BID STATUS

BID FROM THE PRIVACY OF YOUR HOME

BID AS OFTEN AS DESIRED | BIDDING ENDS
ON MAY 13 @ 6PM

Call the Intel Team:
Daniel King AU006299
(717) 917-5844
Joel Yoder AU006463
(610) 750-2427
Henry Kauffman Jr. AA019894
(717) 799-4264
Samuel Stoltzfus AU006482
(717) 371-3010



View more photos at
IntelAuctions.com

Property Lines & Land Features



Property lines shown are approximate and for reference only; buyer to verify boundaries.

Property and Tax information:

Condition

- House: Great
- Garage: Good

Acres: .57 acres

Taxes: \$2223

Township: Watson

Sewer Type / Location: Drain field below house next to porch

Well Location: Between house and drive



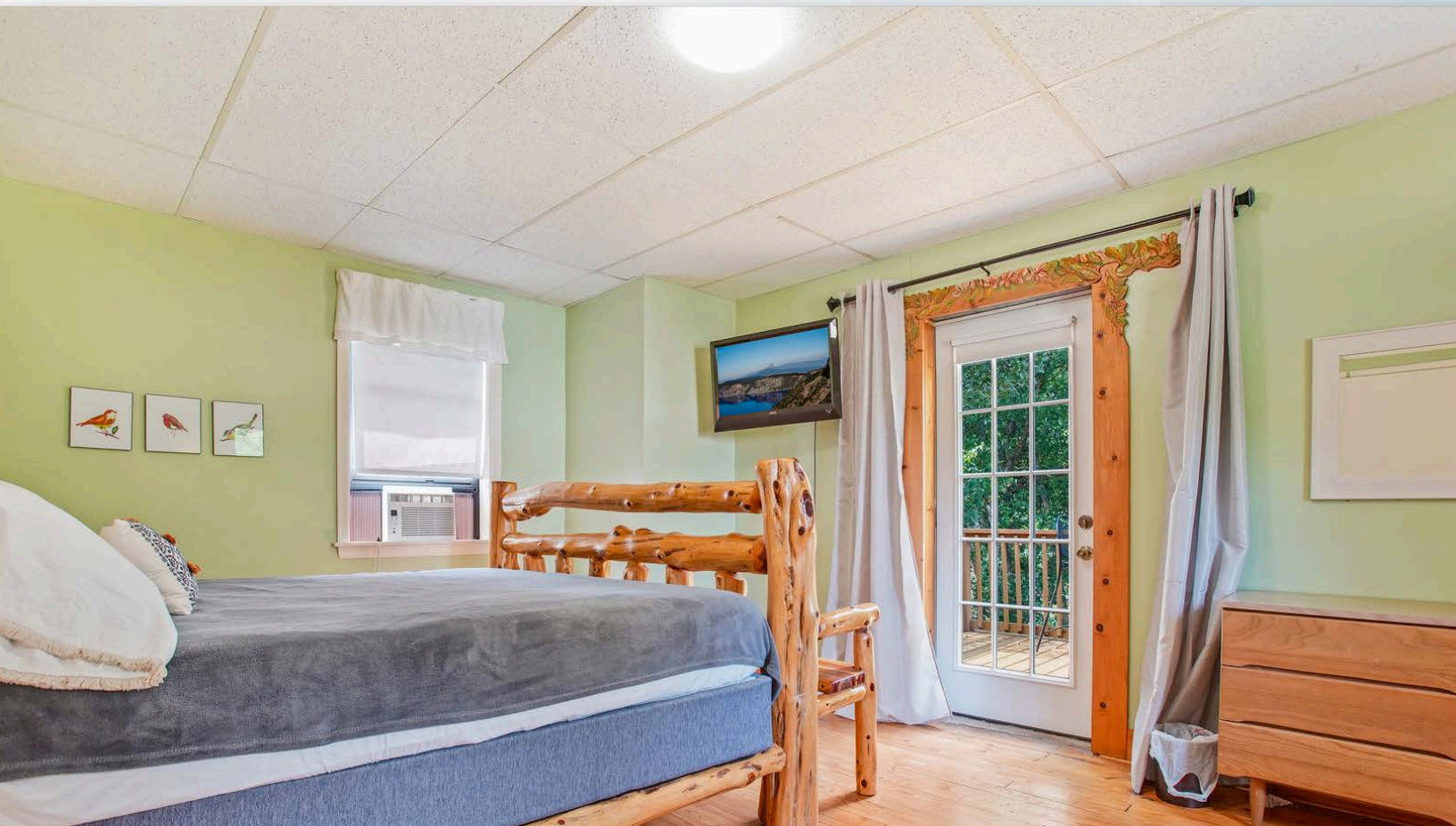
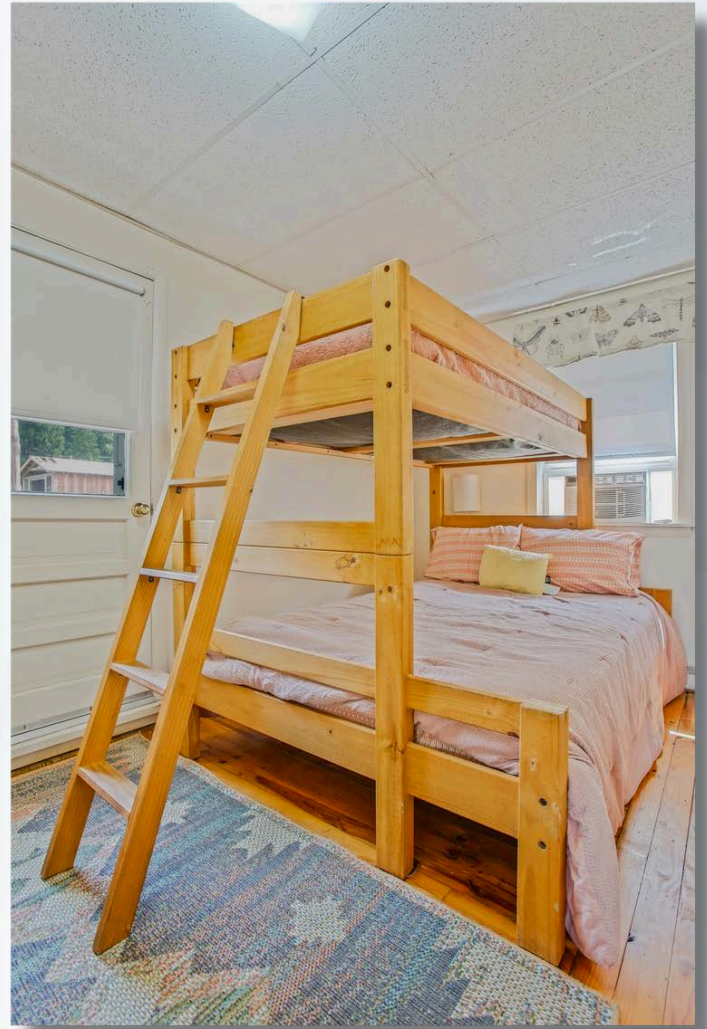
Thinking about buying a property?

Let us put the deposit money down
for you. Call 717-917-5844









UPCOMING AUCTIONS & EVENTS

- APRIL 2 (6PM) - 425 CIDER PRESS RD, LOCK HAVEN, PA - ERVIN STOLTZFUS**
3 acres with a new home built in 2022. Woods, stream, great location. **SELLS VIA INTEL AUCTIONS PHONE BIDDING!**
- APRIL 8 (6PM) - 6142 BEAVERDAM RD, NARVON, PA - DAVID & PRISILLA BEILER**
3.03 acres with modern family homestead. 4 bed, 2 bath house, horse barn, pastures, outbuildings. Loaded with extras!
- APRIL 11 (9AM) - 3010 COMPASS RD, HONEY BROOK, PA - KEYSTONE STEEL STRUCTURES**
Large Equipment including pettibones, skidloaders, mini stand-on loaders, work truck.
Welders, generators, huge selection of corded and cordless dewalt tools.
- APRIL 15 (6PM) - 471 WEAVERTOWN RD, MYERSTOWN, PA - JAMES & NANCY STOLTZFUS**
Country setting in Lebanon County. 3 bed, 2 bath home. Horse barn, pasture, chicken barn. Rec-Room. Surrounded by Farmland.
- APRIL 16 (9:00AM) - 8 TOWNSHIP DRIVE, PARADISE, PA - VINTAGE WOOD & FORGED IRON**
Complete dispersal! Trucks, trailers, combilifts, woodworking equipment, lots of tools. Will be an exciting day!
- APRIL 17 (6PM) - 498 GREEN LN, BRISTOL, PA - LANCASTER BAKERY**
Huge opportunity to buy a well established bakery at the sought after Bristol Markets. Highly Profitable. **SELLS VIA INTEL AUCTIONS PHONE BIDDING!**
- APRIL 22 (6PM) - 271 RAMSEY DR, JERSEY SHORE, PA - WINDY HILL RENTALS**
Air Bnb rental. Prime location along the popular Pine Creek. Pickle ball court, bikes, kayaks, loaded and sells fully furnished.
SELLS VIA INTEL AUCTIONS PHONE BIDDING!
- APRIL 23 (6PM) - 624 BELLEFONTE AVE, LOCK HAVEN, PA - NLS REALTY**
3 unit apartment building. Solid brick structure, fully occupied. **SELLS VIA INTEL AUCTIONS PHONE BIDDING!**
- APRIL 24 (5PM) - 2271 ROBERT FULTON HWY, PEACH BOTTOM, PA - STALLION PRESENTATION**
Sale preview and Stallion Presentation. Free pork sandwiches and ice cream!
- APRIL 25 (10AM) - 2271 ROBERT FULTON HWY, PEACH BOTTOM, PA - QUALITY HORSE SALE**
To consign quality, sound horses call 717-529-3846. Preview at 7AM, sale at 10AM.
- APRIL 27 (6PM) - 113 BLACK HORSE ROAD, PARADISE, PA - STEPHEN & CRYSTAL ZIMMERMAN**
Once in a lifetime opportunity to invest in a detailed house, horse barn, and retail store all in one. Work from home! Formerly Leacock Shoe Store.
- APRIL 28 (6PM) - 31 HERSHEY AVE, PARADISE, PA - NAOMI (CHRIST) FISHER**
Paradise Homestead. 4 bed, 2 bath home with a newer 16x24 garage, horse barn. Convenient Location!
- APRIL 29 (3PM) - 150 EASTBROOK RD, SMOKETOWN, PA - EASTBROOK WELLSRING CARE CLINIC**
Food, fun, and a faced paced auction! Swingsets, patio sets, grills, tools, gift baskets! Call 717-669-5754 to donate items.
- MAY 5 (6PM) - 555 MEETING HOUSE RD, GAP, PA - JOHN MARSHALL ESTATE**
Peaceful setting. 1 acre with single wide house needing some updates. On-site well, sewer, electric. Ready for your personal touch.
- MAY 8 (1PM) - 794 STATE RT 25, MILLERSBURG, PA - CHUBB CONSTRUCTION LIQUIDATION**
7 work trucks, trailers, skid loaders, excavators, roofers buggy. Huge lineup of construction tools.
- MAY 9 (9AM) - 5763 NORTHEIMER RD, NARVON, PA - DANIEL & MIRIAM MILLER**
Beautiful country setting with updated house, barn and outbuildings. Also selling an interesting line of tools, construction equipment, & household items.
- MAY 11 (6PM) - 740 LINCOLN GARDENS RD, EPHRATA, PA - STEPHEN & MARY STOLTZFUS**
Modern home with incredible views! 1+ acres with 3 bed, 2 bath home, large garage, full basement, large backyard. *Detailed Ephrata Home!*
- MAY 12 (6PM) - 218 SILVER MINE RD, CONESTOGA, PA - HENCHE HOLDINGS LLC**
3.7 acres with 4-unit apartment building plus 2 different single family homes and a 6-unit storage building all situated along the beautiful Pequea Creek. *Investment Opportunity!*
- MAY 13 (6PM) - 96 FROG HOLLOW RD, JERSEY SHORE, PA - FISHER'S BNB LLC**
Pine Creek Lodge. 2 bed, 2 bath house with 2nd floor balcony, waterside camping. Amazing Opportunity! **SELLS VIA INTEL AUCTIONS PHONE BIDDING!**
- MAY 15 (6PM) - 23 N MARKET ST, LANCASTER, PA - STOLTZFUS FARMS PRODUCE MARKET**
Profitable produce stand in Lancaster Central Market. Great customer base for local grown produce, open year-round 3 days @ week.
SELLS VIA INTEL AUCTIONS PHONE BIDDING!
- MAY 19 (6PM) - 2014 MAIN STREET, NARVON, PA - COMMERCIAL PROPERTY**
Prime opportunity to have your own business location. Great exposure right along RT 23 in Churchtown, PA. *Exciting listing!*
- MAY 20 (6PM) - 5624 OLD PHILADELPHIA PIKE, GAP, PA - SAM & ANNA MARY EBERSOL**
2.6 acres with a 5 bed, 2 bath home. 40' x 60' horsebarn/garage with full 2nd floor rec-room, kitchen, and bathroom. Outbuildings. Pastures. *White Horse area!*
- MAY 26 (6PM) - 350 MIDDLE RD, MILLERSBURG, PA - JOHN & SARAH KING**
Dauphin County Deluxe! 6 bed 3 bath home, 3000 sq ft shop all on 10 acres bordering Shippens Run Creek.
- JUNE 27 (10AM) - 1824 RED BANK RD, MCALISTERVILLE, PA - BETR LAND LLC**
127 acre organic farm. Dairy facilities new in 2010. House recently remodeled. *Rare opportunity!*
- JUNE 29 (6PM) - 7814 STATE RT 147, SUNBURY, PA - AMOS JAY FISHER**
11.5 acre, 3 bed 4 bath homestead with 24' x 30' horse barn, garage, pastures, woods. *Great location!*
- JULY 7 (6PM) - 1113 UPPER WOODS RD, HONESDALE, PA - UPPER WOODS CABIN**
34 acres with a secluded 2 bed, 2 bath Air BnB deluxe selling fully furnished. *This hidden gem borders State Game Lands 159 and offers the best of PA Hunting including white tail deer, black bear, turkey, coyotes, bobcats, etc.*
SELLS VIA INTEL AUCTIONS PHONE BIDDING!
- JULY 10 (6PM) - SLATE RIDGE RD, WHITEFORD, MD - STOLTZFUS FOREST PRODUCTS**
Hunter's Paradise! 157 acres woods. Prime Harford County, Maryland hunting. Just 45 minutes from Gap, PA.
SELLS VIA INTEL AUCTIONS PHONE BIDDING!

★ **DATE PENDING - 291 HEBE BYPASS RD, HERNDON PA - DANIEL & SYLVIA MAE ESH**
6 acres complete with 5-bedroom, 2 bath home that is fully remodeled with modern features.
Horse barn, 30 x 40 shop/garage with upstairs rec-room. *NICE LOCATION!*

★ **NEW LISTINGS**



Invest - Relax - Enjoy

